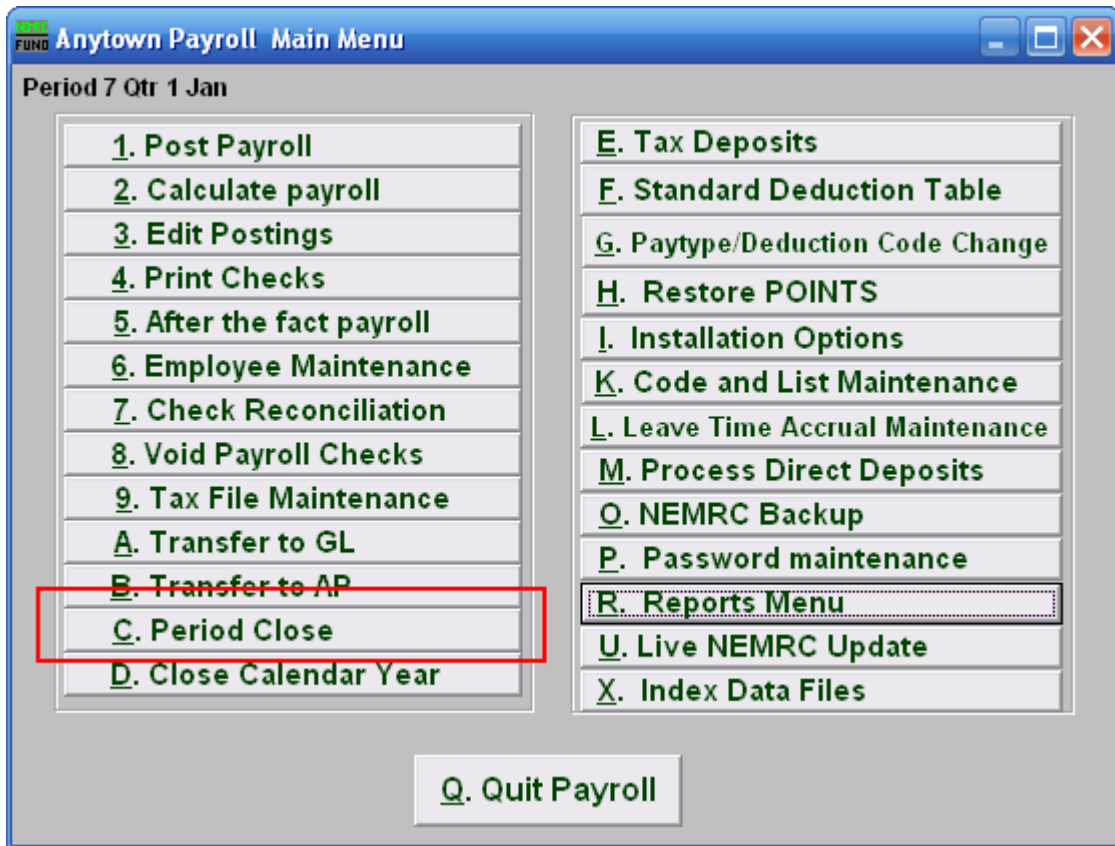
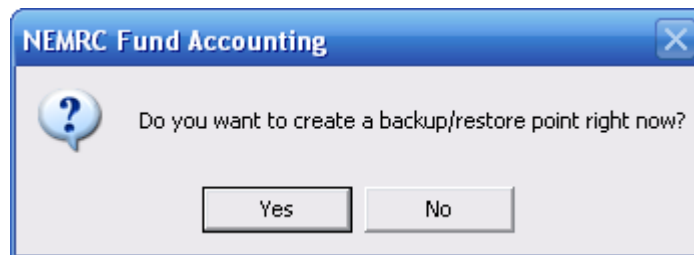


# Payroll

## C. Period Close



Click on “C. Period Close” from the Main Menu and the following window will appear:

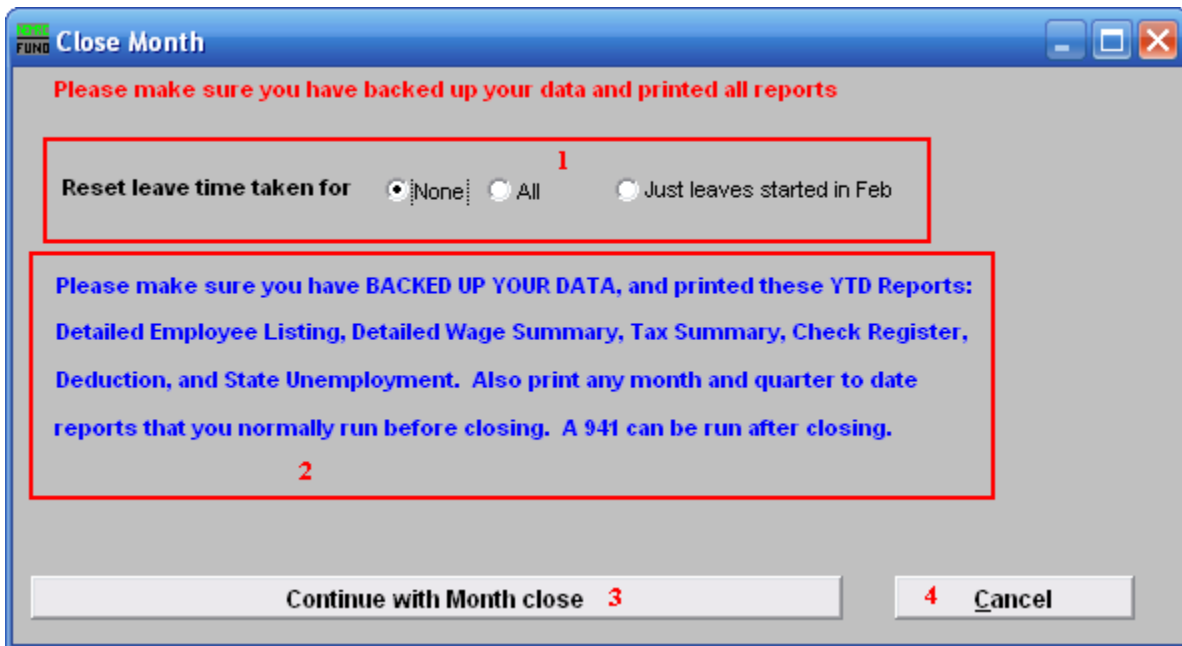


You should choose “Yes” when this notice appears. It is always very important that you backup your data. Keep in mind that this only backs up the data for the module and entity that you are in. Keep in mind that Restore Points are not a substitute for the regular backup routine.

After the Restore Point is made, the following window will appear:

# Payroll

## Period Close



- 1. Reset leave time taken for:** The reset of leave time does not alter the amount of leave time available. It does reduce the accrued value of leave time by the amount that has been taken. This can result in a negative accrual. The default option does nothing. The choice of **All** will perform the change on all leave times for all employees as found in Employee Maintenance. The choice of **Just leaves started in** \_\_\_ will evaluate each start date for the leave time for each leave time and employee.
- 2.** Read this notice carefully before continuing.
- 3. Continue with Month close:** Click this button to perform the following task:  
All MTD (month to date) values will be reset to zero.  
If closing March, June or September the QTD (quarter to date) values will be set to zero.  
If closing the month ending the fiscal year then FTD (fiscal to date) values will be set to zero. The Main Menu option Year Close is used when closing the month of December.
- 4. Cancel:** Click “Cancel” to cancel and return to the previous screen.